

Committed to the
environmental and
economic well being
of our community

Lake Roosevelt Forum NEWSletter

WINTER 2017

<i>Recreation economy takes center stage</i>	2
<i>Lincoln County opens new vistas for promoting Lake</i>	3
<i>National Park Service Updates</i>	4
<i>WDFW redband trout fishing rule changes</i>	5
<i>EPA Remedial Investigation updates</i>	6
<i>Invasive mussel scare prompts calls for heightened vigilance</i>	7
<i>Students & teachers enjoy Lake Roosevelt Water Festival</i>	8

SPONSORS

Bonneville Power Administration
Bureau of Indian Affairs
Bureau of Reclamation
Ferry County
Lincoln County
National Park Service
Spokane Tribe of Indians
Stevens County
Upper Columbia United Tribes
Washington Department of Ecology

Forum Conference looks toward future

256 people attended one or both days of the 2016 conference. They represented a dynamic cross section of area tribes, natural resource managers, agency folks from throughout the Northwest, elected officials, conservation interests, teachers and students, and the general public.

Sessions on fisheries, water quality, recreation and topical concerns like climate change and lake operations were threaded through the two days. Said Don Dashiell, President of the Forum's board and Stevens County Commissioner, "The conference looked at what's coming and reminded us why we're ready to more than handle it."

Bubbling below the surface and occasionally rising above is a future promising change, but uncertainty as to what change looks like. Some examples:

- Federal action agencies (the U.S. Army Corps of Engineers, Bureau of Reclamation, and the Bonneville Power Administration) have kicked off a five-year process to prepare an environmental impact statement (EIS) to operate 14 multi-purpose federal dams in the Columbia River Basin. With Grand Coulee being the "battery" for the system, analyzing the socio-economic and environmental effects of operating these dams puts Lake Roosevelt at the center of discussions. BPA with support from the Bureau and Corps gave an overview of what to expect.

- Regardless of whether one thinks climate change is human induced or not, the effects are readily being seen. Presentations by the Bureau of Reclamation, Ecology and WSU provided insights into how managers and policymakers will develop



and adjust infrastructure to meet future power, irrigation, flood control, fisheries, recreation and other demands. In simple terms, what agencies are adjusting for is more precipitation in winter and less during the summer. By extension, runoff and river flows are expected to increase in the winter and decrease in the summer because of cascading changes like when snowpack melts.

- Salmon reintroduction is actively being explored. Tribes and consultants from both the U.S. and Canada shared literature searches and studies investigating habitat potential, donor stocks, and reintroduction risks. In addition, a life cycle model is under development that will inform probabilities and opportunities for success. The vision is breathtaking and the road complex. Success, in no small part, will

Recreation economy takes center stage

In December, the recreation community, Congress and President Obama passed the Outdoor REC Act. For the first time, the billions of dollars associated with this industry will be counted as part of the nation's Gross Domestic Product.

This will further shed light on the outdoor industry. Sometimes called a "sleeping giant," estimates are that recreation supports more than \$646 billion in consumer spending and 6 million jobs annually.

Keynote presenters at the Lake Roosevelt Forum conference provided context, aspirations and challenges for what this means locally, state-wide and nationally. In Washington, for instance, at least 63% of residents participate in outdoor recreation each year, with 446 million participant days on

"we're not just supporting more recreation, but adapting to changes in how people recreate."

A survey conducted by Chase Card Services supports Foster's perspective, reporting that "When millennials are 'out there,' what they want is lots of friends along and a party atmosphere. In fact, they are more likely than any other group to travel socially with friends and family." And they share their experiences on social media, with three out of four millennials posting to social networks at least once a day while traveling.

Recreation is, of course, far more than just economics. Michelle Haeefe, a Research Associate at Colorado State University, shared results from a study pegging the economic value of the National Park system and programs to the



public lands. That translates into over \$21 billion in consumer spending, 200,000 direct jobs, and \$1.6 billion in state and local revenue.

Jon Snyder, Washington State's first Outdoor Recreation Economic Policy Advisor, gave the annual recreation numbers for Stevens, Lincoln and Ferry counties as \$383 million estimated expenditures, 2,372 estimated employment, and \$23.4 million received in annual state and local sales tax.

Recreation being a growing part of the economy, however, also forces us to focus on values and challenges. Dan Foster, Lake Roosevelt National Recreation Area Superintendent, talked about adapting to the culture of millennials and social media, like sharing selfies. "At national parks," said Foster,

American public at a very conservative \$92 billion. This estimate includes the "intrinsic value" of preserving National Parks, whether people use them or not. The take away of their research is straight forward: overwhelmingly, the public is not interested in diminishing or selling off precious public lands.

That leaves fundamental questions and challenges of how to maintain, much less enhance, what is available. On the positive side, Foster pointed out that 68 of 86 park, conservation, and restoration measures placed on ballots throughout the nation were approved (a 79% passage rate!).

For the state, Steve Pozzanghera, Washington Department of Fish and Wildlife's Eastern Regional Director, gave

CONTINUED ON PAGE 3

perspectives based on the department's Washington's Wild Future initiative. Here, listening sessions and social media honed in on user demands and interests. Using this feedback, WDFW identified about \$60 million in potential investments over six years. WDFW has proposed funding this and meeting increased program support with a combination of fee increases and support from the state's general fund.

Noted Pozzanghera, "The reality is we're addressing a two-fold challenge: addressing cuts dating back to the great recession that are not fully restored, and understanding funding and license revenue aren't keeping pace with public desires and inflation."

Taking it down to the local level, commissioners Scott Hutsell from Lincoln County and Paul Jewell from Kittitas County, explained the costs as well as the benefits of supporting recreation in their communities. For instance, providing emergency services in wilderness areas can be very costly.

Like WDFW, the counties are also asking that cuts from the great recession be restored. Specifically, when a state agency acquires private property and thus makes them public lands for recreation or conservation, county tax bases need to remain whole. To do this, counties receive payments in lieu of taxes (PILT). In 2012, the legislature froze the state payment formula at 2009 levels for state acquisitions. In addition, federal agencies make PILT payments to states based on land acreage by county and leaves the distribution of these funds to the state, which is controlled by state legislatures.

Said Laura Berg, land-use policy director for the Washington State Association of Counties, "When you look at the list of the counties that get PILT, they're all in Eastern Washington, and these are the counties just struggling to hang on."

"The message is a bit mixed," said Forum Executive Director Andy Dunau, "The value of recreation and public lands, both direct and intrinsic, keeps climbing. But our ability to provide a standard of stewardship for these lands continues to be a challenge." 🌐

Lincoln County opens new vistas for promoting Lake Roosevelt tourism



Margie Hall

"I just want people to know that when they're driving through Lincoln County, they just need to turn off the highway to find Lake Roosevelt," said Margie Hall, Lincoln County Economic Development Council (EDC) Executive Director. "It's shocking how many people drive by and have no idea this scenic wonder is there and easily accessible."

According to Hall, getting people to make that turn is important to the Lincoln County economy. When people stop at stores, restaurants and other service providers, it's a source of critical retail tax dollars and support for small businesses. And because more than 90% of Lincoln County tourism is associated with people visiting Lake Roosevelt, marketing the lake is a big deal.

Research conducted by the Lincoln County EDC led them to conclude that promoting Lake Roosevelt requires a more hands-on social media approach. "We're going beyond people relying on search engines like Google to discover Lake Roosevelt," said Hall. "We're targeting platforms and sites like Pinterest and Trip Advisor to reach out to anglers, boaters

and others looking for the next great adventure." From here, the EDC can direct them to visitlincolncountywashington.com to learn more.

To do this, \$4,000 in lodging tax dollars was awarded to the Visitor and Convention Bureau to roll out a new Internet and social media tourism program. This is the first year of a long-term effort to become sophisticated about who to target, providing them the content they are looking for, and maintaining the commitment.

The lodging tax revenue primarily comes from the rental of house boats at Seven Bays and Keller Ferry marinas by Lake Roosevelt Adventures, a National Park Service concession operated by Guest Services Inc. "It's a bit of a virtuous cycle," Hall said. "We use the lodging tax to promote Lake Roosevelt and the houseboats. In turn, that supports more business for them and retail tax dollars for us."

Lincoln County's efforts are also synergistic with those of the Lake Roosevelt Long Range Interpretive Plan drafted by the Park Service. Both efforts believe there is a need to increase public awareness of Lake Roosevelt beyond the Spokane tourist arc, and both efforts embrace using social media to do it.

National Park Service Updates

Road trip alert, exploring the Ice Age Floods National Geologic Trail

A NPS web site was launched to help visitors looking to explore all or part of the Ice Age Floods National Geologic Trail. Go to www.nps.gov/iafl to start planning your 2017 adventure. Among its features, the site highlights places to go, things to do, directions, and multi-media views of geological formations.

Lake Roosevelt National Recreation Area (NRA) 2017 Boat Launch Permits Available

2017 boat launch permits for Lake Roosevelt NRA are available. Regardless of vessel type, boaters can pay either an \$8 fee for unlimited launches over a 7-day period that begins at time of purchase; or a \$45 permit that allows unlimited launches through December 31, 2017. You can purchase by mail, on-line or at one of six vendor locations. Go to www.lrf.org/boatlaunchpermit to get details on payment options.

There are a couple changes compared to 2016. The National Park Service no longer offers discounts for early purchases. Any Golden Age, Golden Access and Interagency Senior or Access Pass cardholders discounts no longer apply for the annual boat launch pass. However, the half price discount for these pass holders does apply to the seven-day permit available at the launch ramps.

For questions, contact Maria Jay, the Lake Roosevelt NRA fee coordinator at mary_jay@nps.gov.

Public input taken on recreational and forest health improvements

In December, Lake Roosevelt NRA hosted a public scoping meeting to discuss the expansion of a variety of outdoor recreational opportunities and a forest health project near Rickey Point. Said superintendent Dan Foster, "Recreational options we've been looking at include expansion of the Park's trail system and development of a disc golf course, archery range and/or a non-motorized Kettle River water trail. We are continuing to investigate appropriate uses of Lake Roosevelt NRA and obtaining public comments is integral in that process."

Draft Long Range Interpretive Plan out for review

With over 1.2 million visitors annually, a core task of park service staff is to provide educational and interpretive services to diverse people of all ages and backgrounds. In 2016, a draft Long Range Interpretive Plan was created to guide these efforts. The plan builds on the 2001 plan, featuring evolutions in technology, environmental stewardship and cultural values.

Primary interpretive themes include "The River," "Recreation," "Geology," "Ecosystems," and "People." Given these themes and management goals, the plan recommends an array of outreach strategies and programming. Not surprisingly, use of the Internet and social media to expand and enhance outreach is recommended. A key focus is to use these tools is to reach out to "... visitors who are still being introduced to LARO and are beginning their interaction with the Park."

Two initiatives already developed, planned or underway are a Park Atlas and campground mapping project, and development of a mobile unit to support interpretive programs. On the more traditional side, the plan prioritizes updates and upgrades to interpretive signage and wayside exhibits found at high traffic areas like boat launches and campgrounds.

Contact Denise Bausch at denise_bausch@nps.gov to receive the Draft Executive Summary and provide comment.

National Park Service Develops a Mosquito Action Plan

Over the past two years, there has been increasing concern about growing mosquito populations around the Kettle Falls area. In 2015, the NPS in conjunction with the Washington Department of Health began testing mosquitos for West Nile Virus (WNV) at two locations within Lake Roosevelt NRA. Testing continued in 2016 and peak mosquito activity was between mid-July and mid-August.

Although trapping results were high, with 15 species and 5 families represented, over 99% of the mosquitoes trapped belong to the family Aedes, which is a nuisance species but not known to be a vector of WNV in Washington. Only mosquitoes in the genus Culex were tested for WNV. Of over 76,000 mosquitos trapped, 382 individuals in this genus were trapped, with 205 able to be tested.

Although WNV has been found in other Washington counties, the first positive documentation came in July from one sample. All subsequent tests in July, August, and September were negative.

In the fall of 2016, Lake Roosevelt NRA developed the Mosquito Action Plan and Surveillance Protocols to address future management of mosquito populations. This plan outlines trapping protocols and provides management actions in response to future WNV detections. All subsequent mosquito monitoring efforts should follow the protocols in this plan. 🌐



FIND YOUR PARK

WDFW redband trout fishing rule changes

The Washington Department of Fish and Wildlife has adopted rules intended to protect wild native redband rainbow trout on Lake Roosevelt and the Spokane and Sanpoil arms. Changes include:



Washington
Department of
**FISH and
WILDLIFE**

- Anglers must now release any trout with an intact adipose fin in Lake Roosevelt from Grand Coulee Dam to the Little Dalles power line crossing. Only hatchery-produced trout, marked with a clipped adipose fin, can be retained.
- The daily catch limit is still five trout, not including

kokanee. But there is no longer a limit on how many of those fish can exceed 20 inches.

- From the Little Dalles power line crossing to the Canadian border, the daily catch limit is now two trout (hatchery or wild), with a minimum size of 18 inches.
- During redband rainbow trout staging, spawning and outmigration. The Sanpoil Arm will now open to fishing June 1, instead of April 1, with a daily limit of five hatchery-marked (clipped adipose fin) trout.

For the complete rule changes, go to WDFW's Sport Fishing Rules Pamphlet Corrections and Updates for July 1, 2016 through June 30, 2017. 🌐

Conference looks toward future

CONTINUED FROM PAGE 1

also depend on continued progress in leveraging funding sources and distributing efforts across organizations.

- The Columbia River Treaty was the largely unspoken sentinel throughout. The assumption is that with the election complete, U.S. and Canadian discussions will gain momentum and hopefully enter the public arena. Balancing recommendations by both countries with salmon reintroduction efforts, the Columbia River EIS and Biologic Opinion, and climate change adaptations can be classified under the heading "unknown."

"With uncertainty can come a bit of anxiousness," said Forum Executive Director Andy Dunau. "So we made an equally strong commitment to hear from our better angels." Students from Reardan High School and Colville Learning Center showed us the next generation is ready for whatever the future holds.

As part of a Future Farmers of America competition, the Reardan students debated both sides of the question "Should salmon be reintroduced to the upper Columbia River watershed?" Fresh off being highly ranked at a national competition in Indianapolis, they gave their final performance at the conference and received a standing ovation. Said the students' teacher Rick Perleberg "It was the best audience for our last presentation. The kids and I had a great time and we were so happy that the presentation was well received."

Students from the Colville Learning Center inspired in a different way. In partnership with Stevens County and others, high school students are fully managing a fish hatchery. Started in 2010 under the inspiration of teacher Jono Esvelt, the hatchery has succeeded as a learning environment and community enterprise. Sadly, Jono passed away in early 2016.

With their teacher, Tami Burns, a moving tribute was given to a man whose legacy lives on.

Juan Martinez, a nationally recognized outdoor education ambassador, continued to remind us why bringing youth into our lives and work early and often is so important. From a hardscrabble life surrounded by gangs in South Central Los Angeles, luck and mentoring brought him to the wonders of nature. His powerful message revolves around the importance of connecting and empowering youth from all cultural, socio-economic and geographic backgrounds to the natural world, seeing it as central to creating the next generation of conservation and outdoor recreation leaders.

Our steadfast friends from the Upper Columbia United Tribes (UCUTs) completed the siren call to our better angels. They produced and shared a video of the Upper Columbia Canoe Journey that took place last summer. Each of the five UCUT tribes (Spokane, Coeur d'Alene, Colville, Kalispel and Kootenai) hand-carved canoes in the traditional style. Launching from their ancestral territories, each paddled two to ten days to Kettle Falls, an ancient site for harvesting salmon as well as being a historic gathering and trading spot. The tribes invited communities throughout the region to join them in "Calling the Salmon back to the Upper Columbia."

"The strength of our future is linked to the strength of our past and the vitality of our youth," said Dunau. "This conference celebrated both. It gives us every reason to be confident as the future unfolds."

Go to www.lrf.org/conf to view presentations. 🌐

EPA Remedial Investigation updates

Over a decade has passed since EPA reached agreement with Teck to conduct an Upper Columbia Remedial Investigation and Feasibility Study (RI/FS) to identify the nature and extent of contamination, and assess possible risks to human health and the environment.

For background and results regarding what's been learned to date, go to www.lrf.org/2015publicguide. Also, each newsletter carries an update and you can go on-line to search blog posts.

At the conference, EPA summarized 2016 activities and shared what to expect in 2017.

Residential Soil Sampling

In addition to sampling and cleanup activities that took place in 2014-2015, a new round of soil sampling occurred in 2016. Extending through the river valley as far south as China Bend, 144 properties were sampled. Landowners are expected to receive results in the winter of 2017. EPA may or may not find lead or arsenic in sampled soil above a level of concern. Follow-up actions, if needed, will depend on the results of soil sampled and developed with landowner consent.

White Sturgeon Sampling

A Lake Roosevelt fishery success story has been using hatchery supplementation to rebuild white sturgeon populations. Success has now reached a point that Lake Roosevelt Fishery co-managers are considering allowing a recreational and tribal subsistence fishery catch for hatchery white sturgeon.

This raises the question of whether hatchery white sturgeon are safe to eat. To answer this question, sampling of 72 hatchery white sturgeon of different sizes and from various locations occurred in the summer of 2016. Fillets were taken from the fish and combined into composite samples for analysis. A draft data summary report is due for EPA review in February.

2009 fish sampling did not include white sturgeon because the fishery was closed.

Mussel and Crayfish Sampling

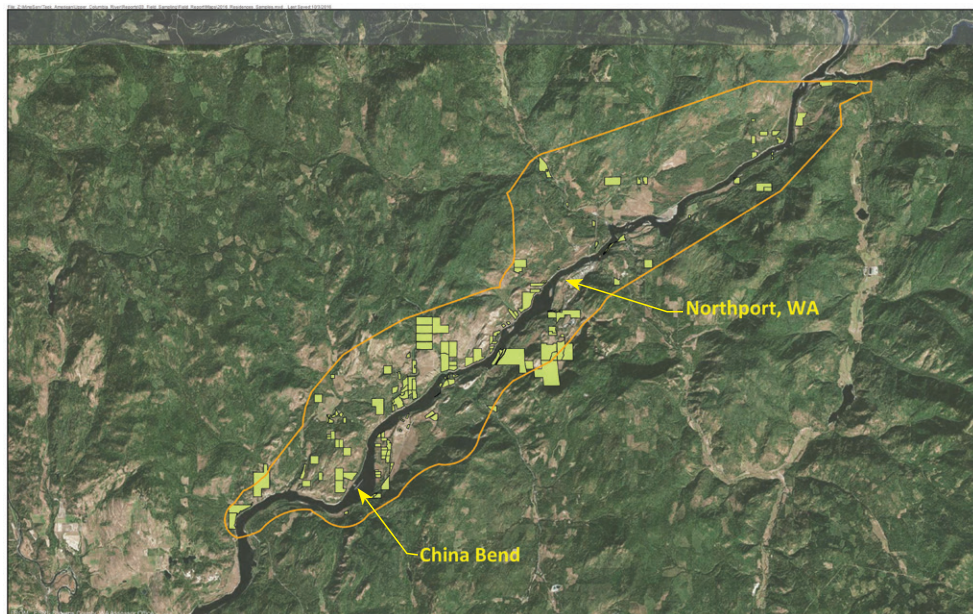
The main purpose of this sampling is to investigate possible human health and ecological risks of chemicals

concentrating in tissues of fresh-water mussel and crayfish. In the spring and fall of 2016, samples were collected at various depths throughout the river/lake system. A draft data summary report is due for EPA review in 2017.

Bossburg Flats

2011 beach sampling showed high levels of lead in sediments at Bossburg Flat Beach, which is located just downstream of the former Young America Mill site adjacent to the historic remains of the Bossburg town site about 4 miles north of Evans campground. As a result, additional sampling took place on beaches and upland areas in a 6-mile river corridor in 2015. As reported in the final data summary report approved by EPA in 2016, results showed the highest lead levels are localized in an upland area of the historic Bossburg town site that is about 5 acres in size. Possible cleanup actions for the area with elevated lead levels of concern are being considered. 🌐

Sampling Field Work



2016 Residential Soil Sampling Locations

Invasive mussel scare prompts calls for heightened vigilance

In early November, Montana officials received from the Tiber Reservoir near Helena the first positive test of quagga or zebra mussels in larvae. That sent a shudder down spines because these invasive species are not only unsightly, mitigation costs and lost economic development can run into the millions of dollars annually.


In December, Montana completed testing of water from 182 separate water bodies and found no new detections of invasive mussels. Although that doesn't equal an "all clear" sign, it does allow managers to focus their attention and hopefully nip an infestation in the bud.

Other good news in December was an announcement by the U.S. Army Corps of Engineers of possible cost-sharing to help fund invasive species watercraft inspection stations in Montana, Idaho, Washington and Oregon. These states already provide about \$ 1.8 million a year on inspection stations. Through the Corps, an additional \$3.7 million could be used to support inspection stations over the next couple of years.

Presentations at the conference continued to educate people about the perimeter defense inspection stations and other programs provide to stop invasives from entering Northwest waters. How they get here is simple: they hitch a ride on a personal watercraft traveling from infested waters.

A collaborative effort linking sixteen states and Canadian agencies is spearheading these efforts. Lisa DeBruyckere, a contractor with Pacific States Marine Fisheries Commission, has been working with and co-facilitating the Building Consensus consortium, sums up the effort this way, "The work the western states and Canadian provinces have done during the past five years to coordinate and collaborate is a model for how regions can work together to prevent the spread of invasive species."

At www.westernais.org, three types of databases and mapping tools are available. One of the databases shows where watercraft inspection stations are located and associated technical information. Another provides contact information for AIS coordinators, so that if you're moving a boat, you can contact someone familiar with the AIS rules and regulations at the destination location.

The USGS waterbody monitoring data base has been moved to this website, enabling you to find where various sampling is occurring. In addition, the site currently contains a data sheet showing all of the quagga/zebra mussel sampling methods used by western organizations as well as a listing of all quagga/zebra mussel field and laboratory protocols used. 



Invasive Mussels Cover Propeller



Invasive Sampling

There are also new education and outreach materials, such as boat hauler notification sheets describing the regulations and requirements from state to state. On another front, and with the assistance and direction of National Sea Grant and the Association of Fish and Wildlife Agencies, the consortium is developing a "model legal framework" so that states, provinces and others can be as consistent as possible in regulating transportation and other variables designed to prevent the spread of invasives.

And lastly, the consortium shared the rapid response exercise developed to train people across agencies in how to collaboratively attack potential outbreaks. The Montana response highlighted the effectiveness of speed, with testing of the 182 water bodies occurring in just two weeks.

STOP



Milfoil



Zebra Mussel

**It is ILLEGAL to transport or spread
Aquatic Invasive Species!**

Before Launching & Before Leaving

**You Must Remove ALL
Plants & Animals from Watercraft, Trailer and Gear.**

**You Must Drain ALL
Water from Fish/Live Wells, Holds and Bilges.**



Unlawful to Transport Aquatic Plants - R.C.W. 77.15.290
Unlawful Use of Prohibited Aquatic Animal Species - R.C.W. 77.15.253
Unlawful Release of Fish, Shellfish or Wildlife - R.C.W. 77.15.250

**To obtain information on free boat inspections, Report a sighting or
Find out more about Aquatic Invasive Species:
Call **1-888-WDFW-AIS (933-9247)** or go to **www.WDFW.WA.GOV****







Students & teachers enjoy Lake Roosevelt Water Festival

Over 400 students, teachers and parents participated in the Water Festival September 13 and 14.

Thank you to each person who prepared and presented informative & fun sessions. This year's presenters included:

- Avista Utilities
- Colville Confederated Tribes
- Ferry Conservation District
- Lake Roosevelt National Recreation Area
- Spokane Tribe of Indians
- Stevens Conservation District
- U.S. Forest Service
- Washington Department of Fish & Wildlife 🌿



Lincoln County opens new vistas for promoting Lake Roosevelt tourism

CONTINUED FROM PAGE 3

And like the Park Service, the visitor bureau will also continue to use more traditional outreach efforts. There will be targeted print advertising in locations like the Washington Department of Fish and Wildlife Regulation Pamphlet, and brochures placed at rest areas along I-90 and I-5.

Hall goes on to note that the challenges of promoting tourism are straight forward. To begin with, the bulk of tourism occurs over just a three-month season. Thus, if there's an economic downturn or a weather event like the wildfires last summer, the effect on businesses and retail tax dollars is immediate and severe. Second, rural economies have a lot less funds available for marketing. That's felt more in this

situation because Park Service funds are used to increase public awareness, not market Lake Roosevelt like a business would. And, of course, lake levels make a difference. "It's kinda like Goldilocks," said Hall. "If the lake level is too high it discourages tourism, and if it's too low it discourages tourism."

The Forum continues to support EDC, Park Service and other efforts with our interactive Lake Roosevelt map and recreation guide, which can be found at www.lrf.org/recreation. Those interested in partnering with the EDC on marketing efforts should contact Margie at margie@lincolnedc.org. 🌿

Thank you to our 2016 conference sponsors!



Teck



AECOM
Built to deliver a better world



Lake Roosevelt Forum

2206 S. Sherman St.
Spokane, WA 99203
1-509-535-7084
email: info@lrf.org

ADDRESS SERVICE REQUESTED

PRESORTED STANDARD
US POSTAGE
PAID
SPOKANE, WA
PERMIT #4

Paper vs. Web ? It's Your Choice

If you'd prefer only receiving the web version of the newsletter, send an e-mail to info@lrf.org. The Forum does not distribute member e-mails or postal addresses to any other organization.

Get On The List

THE LAKE ROOSEVELT FORUM NEWSLETTER is a free publication. If you'd like to be added to our quarterly mailing list, please call us at 1-509-535-7084 or write us at the address listed above. Be sure to spell out your name and street address. Don't forget to include your zip code. ☼

